

**THE NEW YORK STATE CONFERENCE
AMERICAN ASSOCIATION OF UNIVERSITY PROFESSORS
FALL MEETING – FRIDAY, OCTOBER 22, 2010**

**Report of the Chair of the
Committee on Chapters, Members, and Dues**

Committee Members

A. Joyce Furfero, St. John's University (2009-11), Chair
John Marino, UUP-United University Professions (2009-11)
Marcia Newfield, PSC-Professional Staff Congress-CUNY (2009-11)
Jeanette Jeneault, Syracuse University (2010-2012)
Open (2010-2012)

New York State Conference Membership

The most recent membership information was obtained from Katherine Isaac of the AAUP National Office on October 1, 2010. This membership information is more reliable than information from past years, since the national AAUP has finally upgraded its database system. However, Katherine Isaac said, is that national AAUP has no way to verify the status of members who register online and whether or not they are also members of the local organization. Hence, some faculty members classified as "Others" may actually be members of local AAUP chapters. St. John's University is one school with such a problem, because it has no check-off for dues collection and faculty members may register either online or through the local.

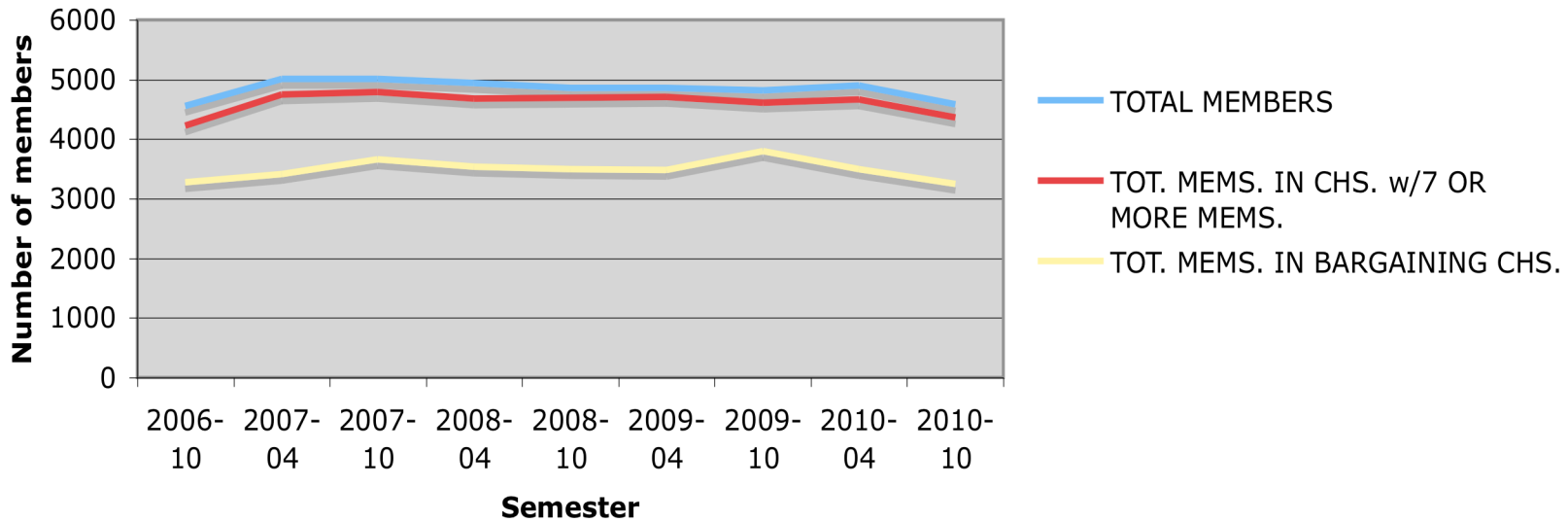
Thanks to better record keeping at National AAUP, I was able to go back and reconstruct the data from the last 4 years. Table 1 is the summary of that data.

Overall membership for the New York State Conference is currently 4,584 members, membership in chapters with 7 or more members is 4,366 members, and membership in bargaining chapters is 3,250 members. These membership numbers are down significantly from the peak year of 2007, when overall membership was 5,008, membership in chapters with 7 or more members was 4,783, and membership in bargaining chapters was 3,659. Membership in bargaining chapters made a small spike in Fall 2009, but then dropped precipitously. See Figure 1. Does anyone have an explanation? I did not have sufficient time to get statewide faculty member data, so we still do not know how the overall NYS AAUP membership numbers compare with actual employment in our industry.

Table 1 NEW YORK STATE AAUP MEMBERSHIP SUMMARY 2006-2010

| | 2006-10 | 2007-04 | 2007-10 | 2008-04 | 2008-10 | 2009-04 | 2009-10 | 2010-04 | 2010-10 |
|--|---------|---------|---------|---------|---------|---------|---------|---------|---------|
| TOTAL MEMBERS | 4559 | 5006 | 5008 | 4943 | 4857 | 4857 | 4813 | 4899 | 4584 |
| No. of Institutions | | 99 | 99 | 99 | 120 | 84 | 156 | 124 | 120 |
| No. of Chapters | 127 | 139 | 147 | 145 | 170 | 136 | | 144 | 139 |
| Tot. Mem. in Bargaining Chs. | 3280 | 3413 | 3659 | 3539 | 3495 | 3488 | 3803 | 3500 | 3250 |
| No. of Bargaining Chaps. | 11 | 11 | 11 | 11 | 11 | 11 | 11 | 11 | 11 |
| Tot. Mem. in Chs. (7 or more mems.) | 4231 | 4746 | 4783 | 4673 | 4692 | 4713 | 4615 | 4667 | 4366 |
| No. of Chs. (7 or more members) | 42 | 49 | 48 | 44 | 43 | 44 | 38 | 39 | 40 |
| Tot. at Institutions without Formal Chs. | | | | | | | | | |
| No. of Institutions | | | | | | | | | |
| Mems. with No Ch. Aff. | 114 | 114 | 66 | 112 | 30 | 31 | 37 | 33 | 41 |
| TOTAL MEMBERS | 4559 | 5006 | 5008 | 4943 | 4857 | 4857 | 4813 | 4899 | 4584 |

Figure 1 MEMBERSHIP AGGREGATES 2006-2010



The number of participating institutions has increased from 99 to 120, but the number of chapters has declined from 170 to 139. What we have is an increasing number of institutions with 1- to 6-member chapters, obviously not enough to carry any weight around a college or university. See Table 2. The schools with “0” membership had only a few members in prior years (never ore than 6 members). You can see that the attrition rate for small-member chapters is very high. The members in these chapters will need a great deal of encouragement going forward, if they are to survive.

Table 2 NEW YORK STATE AAUP MEMBERSHIP IN SMALL CHAPTERS

| | | | | 2010-10 |
|--|--------------------|--------------------------|--|---------|
| Adirondack Community College | | | | 2 |
| Albany College of Pharmacy of Union Univ | | | | 3 |
| Albany Medical College of Union Univ | | | | 0 |
| Alfred University Chapter | | | | 1 |
| American Univ of Beirut | | | | 1 |
| Barnard College Others Chapter | Elizabeth Castilli | ecastell@barnard.edu | | 7 |
| Boricua College | | | | 2 |
| Brooklyn Law School | | | | 1 |
| Broome Comm College Chapter | | | | 1 |
| Canisius College | | | | 2 |
| Cazenovia** | Heather Howley | hahowley@cazenovia.edu | | 3 |
| Clarkson Univ | | | | 2 |
| Clinton Community College Chapter | | | | 1 |
| College of New Rochelle | | | | 6 |
| College of St. Rose | Carl L. Swidorski | swidorsc@mail.strose.edu | | 4 |
| Concordia College | | | | 1 |
| Culinary Inst of America | | | | 3 |
| Daemen College | Ellen C. Banks | ebanks@daemen.edu | | 0 |
| Dominican College of Blauvelt | | | | 2 |
| Dowling College | | | | 1 |
| Dutchess Community College | | | | 3 |
| Elmira College | Michael Clark | mclark@elmira.edu | | 4 |
| Hartwick College | | | | 1 |
| Harvard Univ | | | | 0 |
| Hebrew Union Coll/NY Jewish Inst of Religion | | | | 2 |

| | | | |
|---|-----------------|-----------------------|---|
| Hudson Valley Comm Coll | | | 0 |
| Iona College | | | 5 |
| Ithica College | Frank Musgrave | musgrave@ithica.edu | 8 |
| Jamestown Comm Coll | | | 0 |
| Juilliard School, The | | | 1 |
| Keuka College | | | 2 |
| Lincoln College | | | 0 |
| Long Island Business Institute | | | 0 |
| Manhattan School of Music | | | 1 |
| Medaille College** | John R. Schedel | jschedel@medaille.edu | 3 |
| Metropolitan College of New York | Charles Gray | cgray87021@aol.com | 0 |
| Monroe Community College | | | 0 |
| Mount Saint Mary College N Y | | | 3 |
| Mt. Sinai School of Medicine | | | 1 |
| Nassau Community College | | | 0 |
| New School Univ | | | 3 |
| New York Chiropractic College Chapter | | | 0 |
| New York Coll of Podiatric Medicine Chapter | | | 0 |
| New York Law School | | | 2 |
| New York Medical College | | | 4 |
| New York Theological Seminary Chapter | | | 1 |
| Nyack College | | | 0 |
| NYSUT | | | 0 |
| Onondaga Comm College | | | 0 |
| Orange County Comm College | | | 1 |
| Parsons School of Design** | Pamela Klein | kleinp@newschool.edu | 0 |
| Polytechnic Univ Chapter | Edward Wolf | ewolf@duke.poly.edu | 4 |
| Pratt Institute | | | 5 |
| Roberts Wesleyan College | | | 0 |
| Rockefeller Univ | | | 0 |
| Rockland Community College Chapter | | | 1 |
| Sage Colleges, The (Russell) | Andor Skotnes | skotna@sage.edu | 6 |
| Sarah Lawrence College | | | 1 |
| Siena College N Y | | | 3 |
| St John Fisher College | | | 1 |
| St Joseph's College | | | 3 |

| | |
|---|-----------|
| Suffolk County Comm Coll Ammerman | 1 |
| Taro College | 0 |
| Technical Career Institute | 2 |
| Tompkins Cortland Comm Coll | 1 |
| Touro College | 1 |
| Union Theological Seminary N Y | 1 |
| US Merchant Marine Academy | 1 |
| US Military Academy | 0 |
| Vaughn College of Aeronautics Chapter**** | 4 |
| Wagner College | 4 |
| Westchester Community College | 1 |
| <hr/> Total Members in Small Chapters | <hr/> 128 |

Among the schools with chapters with 7 or more members, some were obvious winners, but many were obvious losers. The biggest winners year-over-year were Union College (155.6%), Pace University (22.7%), LIU (15.5%), Mercy College (11.6%), and College of Mount St Vincent/NY (10.0%). Semester-over-semester, Wells College (35.7%) and Rensselaer Poly Institute (12.5%) were the big gainers. The biggest losers year-over-year were Vaughn College of Aeronautics (42.9%), Yeshiva University (36.4%), SUNY UUP (-25.4%), Hilbert College (-20.0%), Rochester Institute of Technology (-20.0%), St. John's University (13.2%), University of Rochester (-12.5%), Ithaca College (-11.1%), and Marist College (-10.0%)., The rest of the chapters basically held their ground or had small, single-digit losses in membership.

Table 3 THE WINNERS AND LOSERS 2010/2009

| | 2009-10 | 2010-04 | 2010-10 | YEAR-OVER-YEAR | | BY SEMESTER | |
|----------------------------------|---------|---------|---------|----------------|-------|-------------|-------|
| | | | | CHG | % CHG | CHG | % CHG |
| Adelphi Univ | 255 | 256 | 256 | 1 | 0.4% | 0 | 0.0% |
| Bard College | 90 | 98 | 98 | 8 | 8.9% | 0 | 0.0% |
| Barnard College Others | 7 | 7 | 7 | 0 | 0.0% | 0 | 0.0% |
| Colgate Univ | 84 | 84 | 84 | 0 | 0.0% | 0 | 0.0% |
| College of Mount St Vincent/NY | 20 | 22 | 22 | 2 | 10.0% | 0 | 0.0% |
| Columbia Univ | 41 | 40 | 39 | -2 | -4.9% | -1 | -2.5% |
| Cornell Univ | 59 | 65 | 60 | 1 | 1.7% | -5 | -7.7% |
| CUNY Professional Staff Congress | 1038 | 991 | 975 | -63 | -6.1% | -16 | -1.6% |
| D'Youville College | 94 | 90 | 88 | -6 | -6.4% | -2 | -2.2% |

| | | | | | | | |
|-----------------------------------|-------------|-------------|-------------|-------------|--------------|-------------|--------------|
| Fordham Univ | 29 | 31 | 29 | 0 | 0.0% | -2 | -6.5% |
| Hamilton College | 10 | 10 | 10 | 0 | 0.0% | 0 | 0.0% |
| Hilbert College | 10 | 8 | 8 | -2 | -20.0% | 0 | 0.0% |
| Hobart & William Smith College | 46 | 46 | 47 | 1 | 2.2% | 1 | 2.2% |
| Hofstra Univ | 533 | 537 | 530 | -3 | -0.6% | -7 | -1.3% |
| Ithaca College | 9 | 9 | 8 | -1 | -11.1% | -1 | -11.1% |
| LIU | 58 | 64 | 67 | 9 | 15.5% | 3 | 4.7% |
| Manhattan College | 27 | 27 | 27 | 0 | 0.0% | 0 | 0.0% |
| Manhattanville | 26 | 25 | 25 | -1 | -3.8% | 0 | 0.0% |
| Marist College | 10 | 9 | 9 | -1 | -10.0% | 0 | 0.0% |
| Marymount Manhattan College | 13 | 14 | 13 | 0 | 0.0% | -1 | -7.1% |
| Mercy College | 69 | 77 | 77 | 8 | 11.6% | 0 | 0.0% |
| Molloy College | 104 | 108 | 108 | 4 | 3.8% | 0 | 0.0% |
| New York Univ | 78 | 83 | 78 | 0 | 0.0% | -5 | -6.0% |
| Niagara Univ | 145 | 143 | 148 | 3 | 2.1% | 5 | 3.5% |
| NYIT | 238 | 243 | 240 | 2 | 0.8% | -3 | -1.2% |
| Pace Univ | 22 | 25 | 27 | 5 | 22.7% | 2 | 8.0% |
| Rensselaer Poly Institute NY | 19 | 16 | 18 | -1 | -5.3% | 2 | 12.5% |
| Rochester Institute of Technology | 20 | 16 | 16 | -4 | -20.0% | 0 | 0.0% |
| Skidmore College | 26 | 28 | 24 | -2 | -7.7% | -4 | -14.3% |
| St Bonaventure Univ | 26 | 27 | 26 | 0 | 0.0% | -1 | -3.7% |
| St John's Univ | 114 | 123 | 99 | -15 | -13.2% | -24 | -19.5% |
| St Lawrence Univ | 44 | 48 | 47 | 3 | 6.8% | -1 | -2.1% |
| SUNY United Univ Professions | 1024 | 1001 | 764 | -260 | -25.4% | -237 | -23.7% |
| SUNY | 0 | 27 | 25 | 25 | - | -2 | -7.4% |
| Syracuse Univ | 185 | 180 | 180 | -5 | -2.7% | 0 | 0.0% |
| Union College NY | 9 | 23 | 23 | 14 | 155.6% | 0 | 0.0% |
| Univ of Rochester | 16 | 18 | 14 | -2 | -12.5% | -4 | -22.2% |
| Vassar College | 17 | 27 | 17 | 0 | 0.0% | -10 | -37.0% |
| Vaughn College of Aeronautics | 7 | 4 | 4 | -3 | -42.9% | 0 | 0.0% |
| Wells College | 14 | 14 | 19 | 5 | 35.7% | 5 | 35.7% |
| Yeshiva Univ | 22 | 15 | 14 | -8 | -36.4% | -1 | -6.7% |
| Total Members in All s | 4658 | 4679 | 4370 | -288 | -6.2% | -309 | -6.6% |
| Members with No Affiliation | 37 | 33 | 41 | 4 | 10.8% | 8 | 24.2% |
| TOTAL MEMBERS | 4695 | 4712 | 4411 | -284 | -6.0% | -301 | -6.4% |

Finally, I looked at membership by registration type for the last two years (for which I have good data). See Table 4. The news is not good. All of the numbers are flat or down. Part time, graduate student memberships, and members by \$ (\$60 and \$120) are flat, while full-time members (-5.0%) and new entrants (-8.5%) – the life blood of the AAUP – as well as retired persons (-7.0%) are way down. The only category to increase was Associates (11.0%).

Table 4 NEW YORK STATE AAUP MEMBERSHIP SUMMARY 2006-2010

| | 2006-10 | 2007-04 | 2007-10 | 2008-04 | 2008-10 | 2009-04 | 2009-10 | 2010-04 | 2010-10 |
|----------------------|---------|---------|---------|---------|---------|---------|---------|---------|---------|
| TOTAL MEMBERS | 4559 | 5006 | 5008 | 4943 | 4857 | 4857 | 4813 | 4899 | 4584 |
| Full-Time members | | | | | | | 3655 | 3747 | 3466 |
| Part-Time members | | | | | | | 211 | 224 | 213 |
| Graduate Students | | | | | | | 9 | 8 | 9 |
| New Entrants | | | | | | | 651 | 612 | 596 |
| Bands** | | | | | | | | | 17 |
| Member \$60 | | | | | | | 85* | 47 | 35 |
| Member \$120 | | | | | | | | 63 | 52 |
| Associates | | | | | | | 55 | 53 | 61 |
| Retired | | | | | | | 145 | 145 | 135 |
| TOTAL MEMBERS | 4559 | 5006 | 5008 | 4943 | 4857 | 4857 | 4813 | 4899 | 4584 |

| | | |
|---|------------|---|
| | Band \$45 | 3 |
| * members not divided by \$ class | Band \$60 | 1 |
| ** bands are the new dues to be paid by | Band \$100 | 1 |
| members in advocacy (non-collective | Band \$140 | 4 |
| bargaining unit) chapters; members in | Band \$165 | 3 |
| collective bargaining units will pay one | Band \$185 | 1 |
| dues to national and one fee to state as well | Band \$205 | 3 |
| as any local dues | Band \$225 | 1 |

A category called “Bands” is new. It is apparently the new dues structure for members of advocacy (Non-Collective Bargaining) groups. Seventeen persons registered as members of an advocacy group using the new dues structure. Membership in these categories will be interesting to watch!

Respectfully submitted,

A. Joyce Furfero
Chair, Committee on Chapters, Members, and Dues